



\$ 4,939,000



5450 Lackman Rd, Shawnee, KS 66217

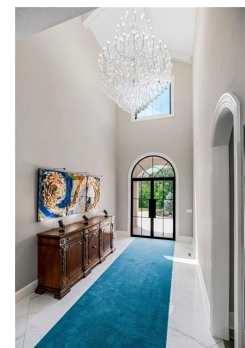
- » Beds: 6 | Baths: 6 Full, 5 Half
- » MLS #: 2530569
- » Single Family | 10,138 ft² | Lot: 14.37 acres
- » More Info: [5450LackmanRdShawnee.IsForSale.com](https://www.5450LackmanRdShawnee.IsForSale.com)



Chrissy Frazier
(816) 518-4181 (Mobile)
chrissy.frazier@kcabode.com



Chartwell Realty LLC
6312 Brookside Plaza
Kansas City, MO 64113
(816) 877-8200



Hidden Luxury Estate in the Heart of the City. Nestled on 14+ private acres, this estate offers unmatched seclusion just minutes from the city. A gated 700 tree-lined driveway leads to a 9,000+ sq. ft. residence crowned with a blue DaVinci roof. Palatial travertine steps ascend to the front door, unveiling a grand entry with soaring 26 ceilings, a dazzling crystal chandelier, and a spiral staircase encircling a glass elevator providing an unforgettable first impression. Designed for seamless indoor-outdoor living, this open-concept estate features floor-to-ceiling windows leading to a private oasis. The 20 x 50 pool showcases a diving platform, cascading waterfall, and gunitite hot tub positioned beneath a glass-filled firebox. The covered cabana, patios, fireplace, and integrated whole-home speaker system make entertaining effortless. At the heart of the home, the kitchen boasts an oversized island with side stations, topped with luxury granite and quartzite, creatively concealing hidden shelves and high-end appliances Sub-Zero, Wolf, and Fischer & Paykel. A butlers pantry with a secondary kitchen enhances functionality. The master suite features private pool access, a laundry room, sitting area, his-and-hers dressing rooms with lighted vanities, and an 8 revolving shoe rack. The spa-like bath includes a glass-enclosed shower, jetted tub, sauna, and waterfall granite dual vanity. A second guest suite offers a walk-in closet and an ensuite.

